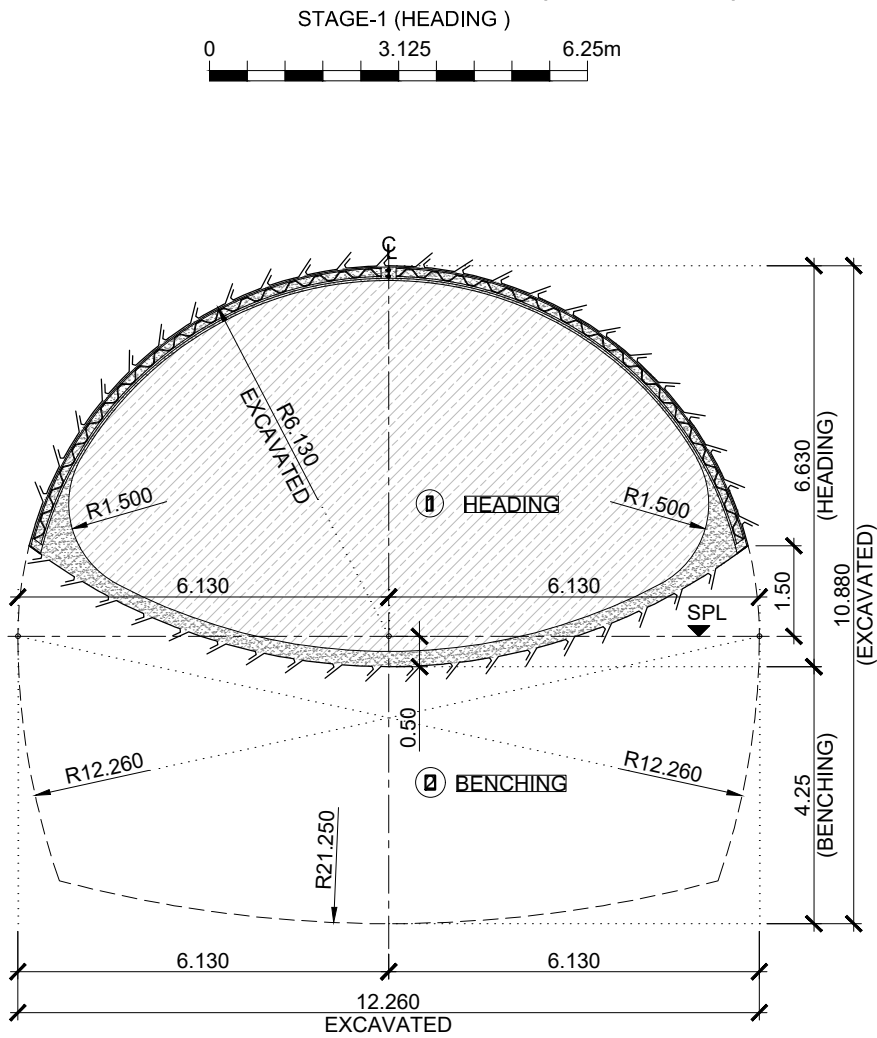
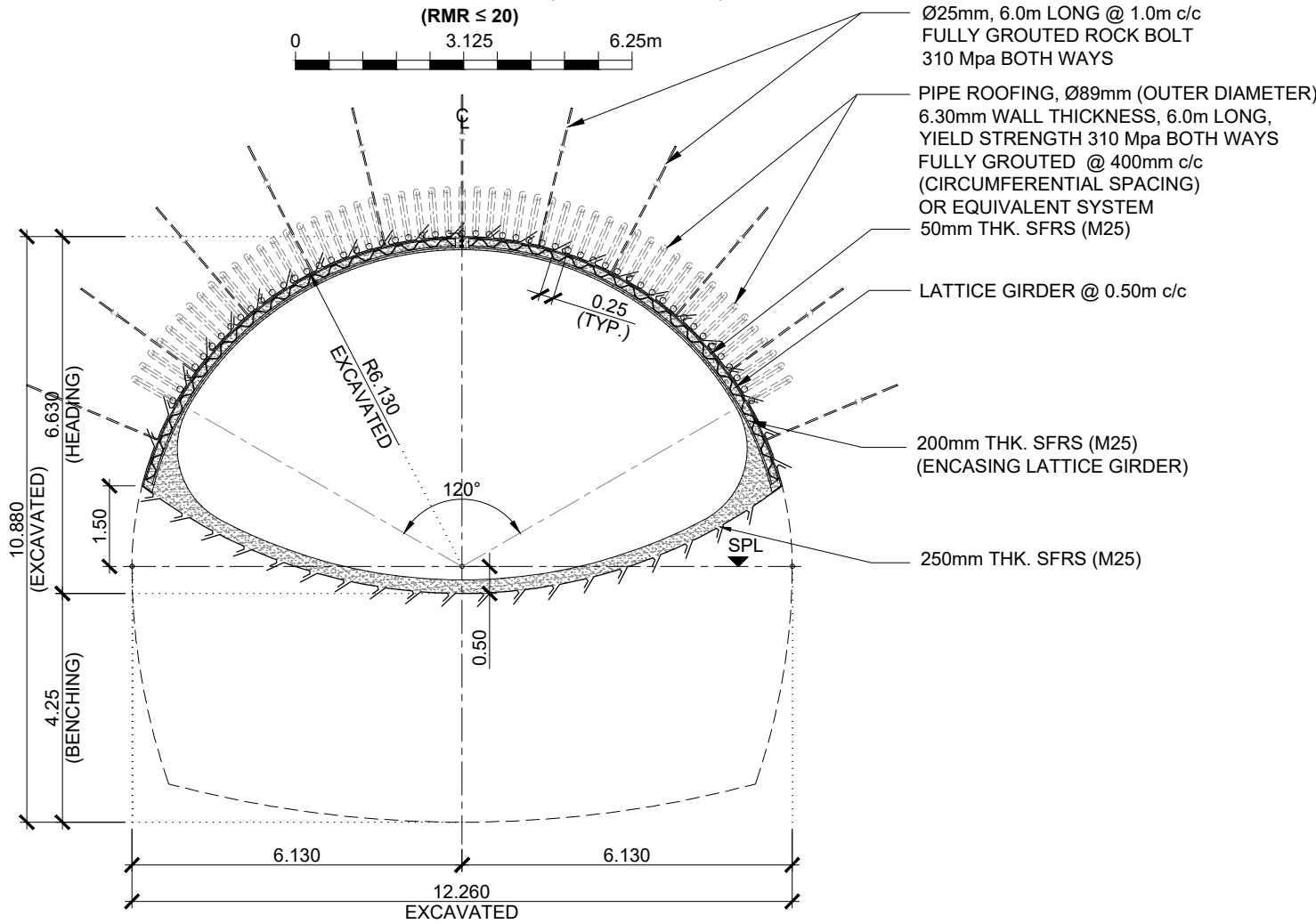


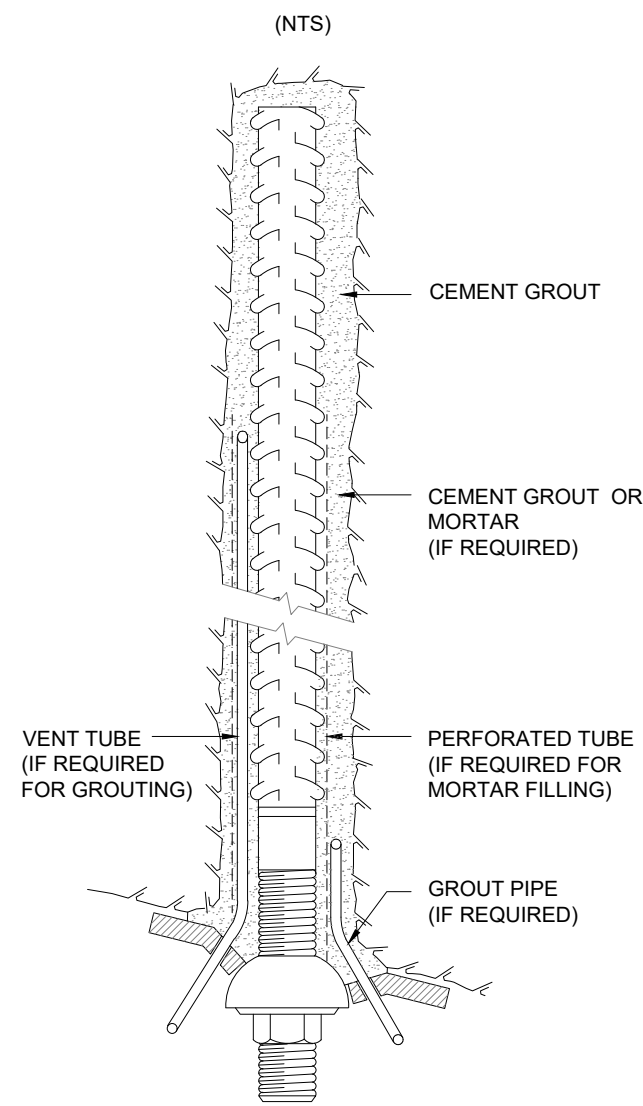
EXCAVATION STAGES (CLASS-V)



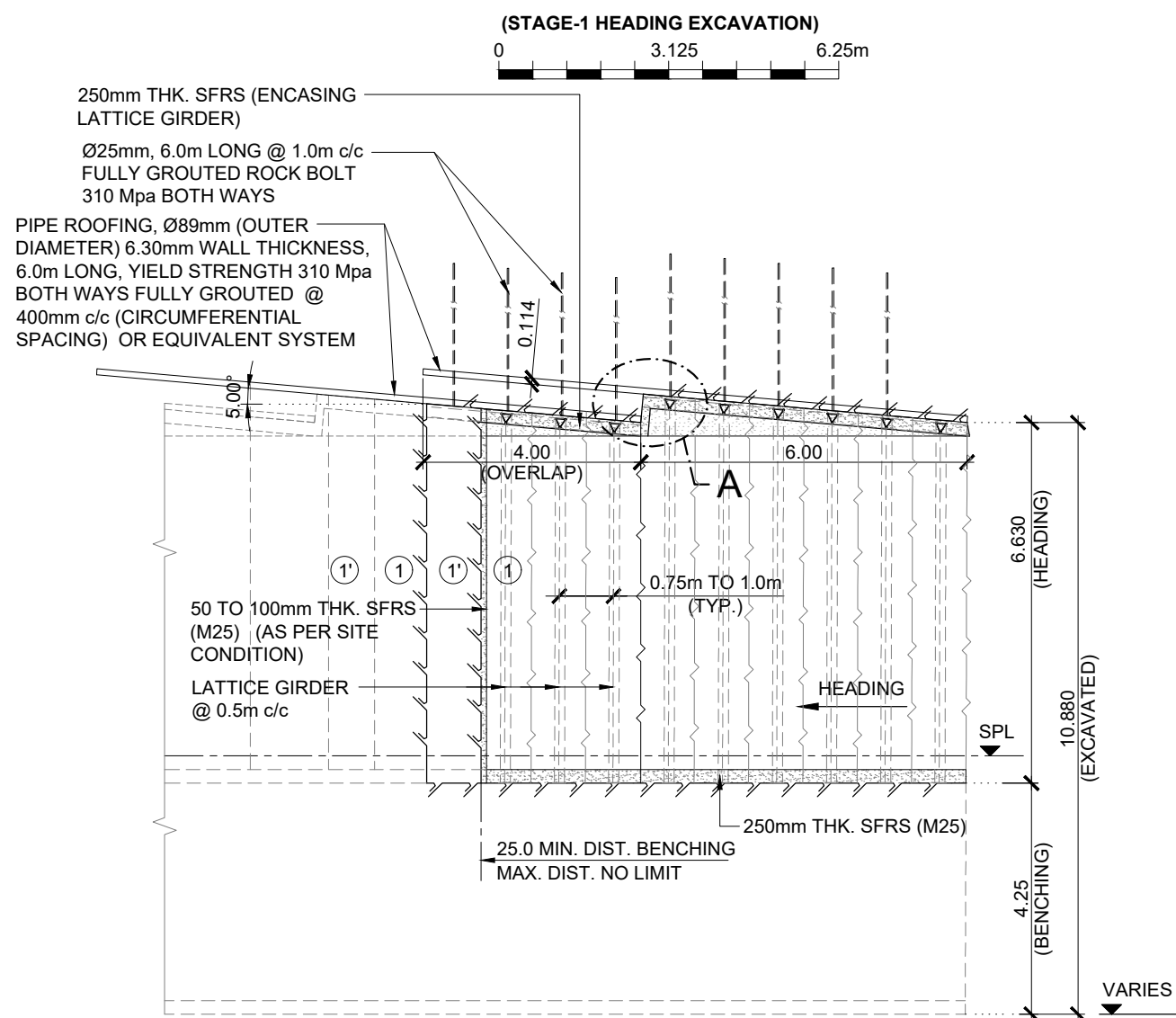
SUPPORT SYSTEM (CLASS-V)



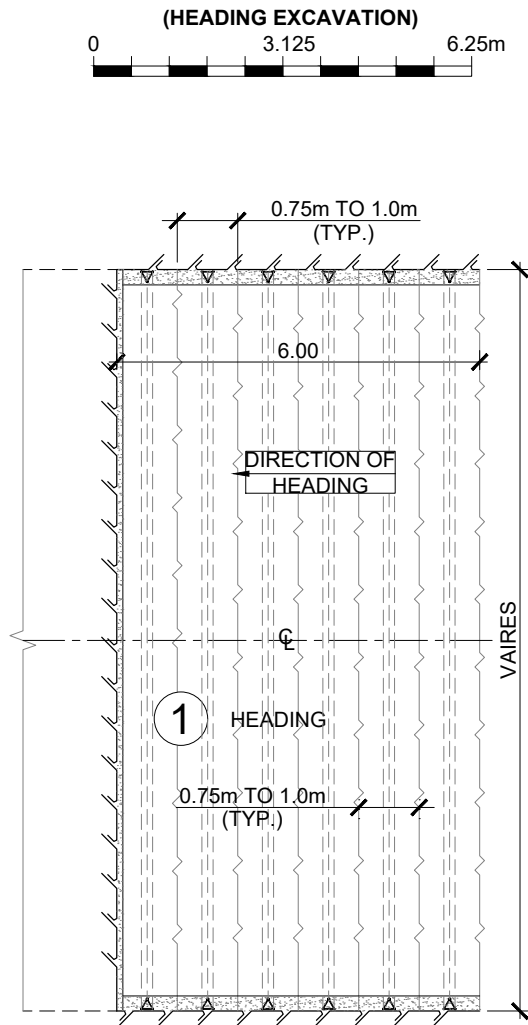
GROUTING DETAILS OF ROCK BOLTS



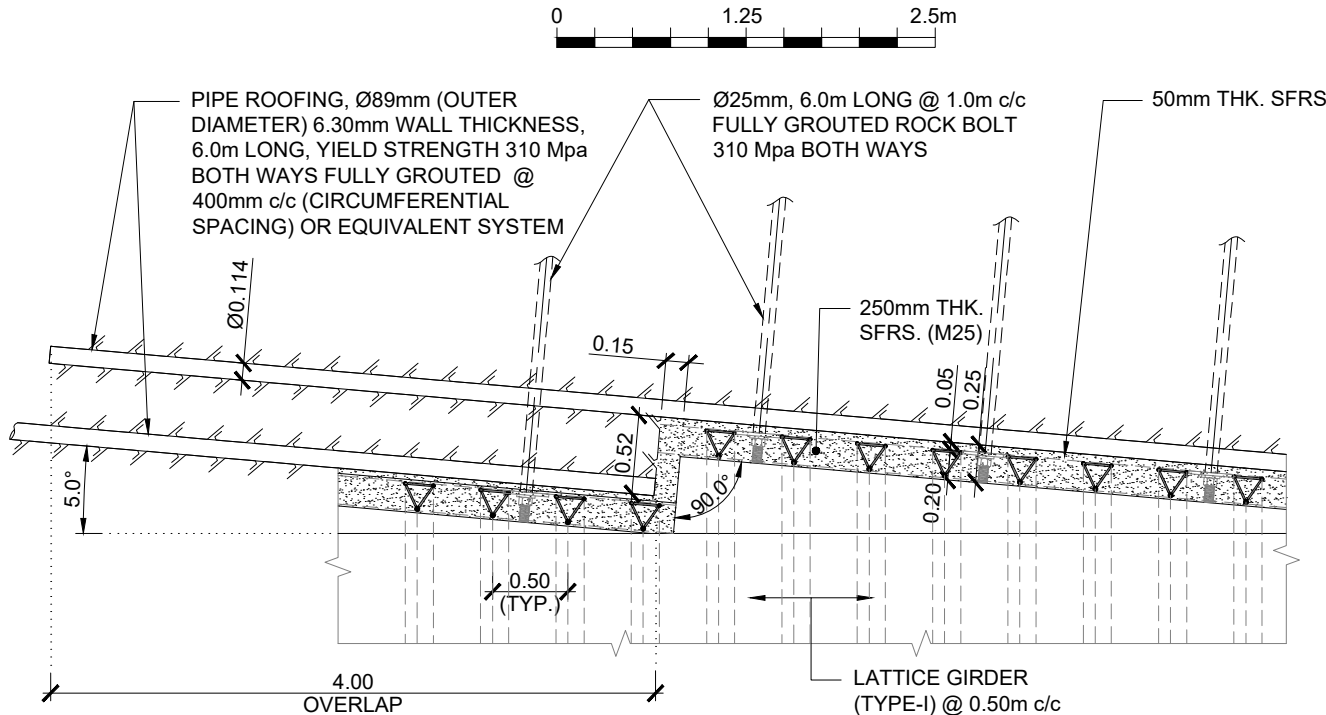
LONGITUDINAL SECTION



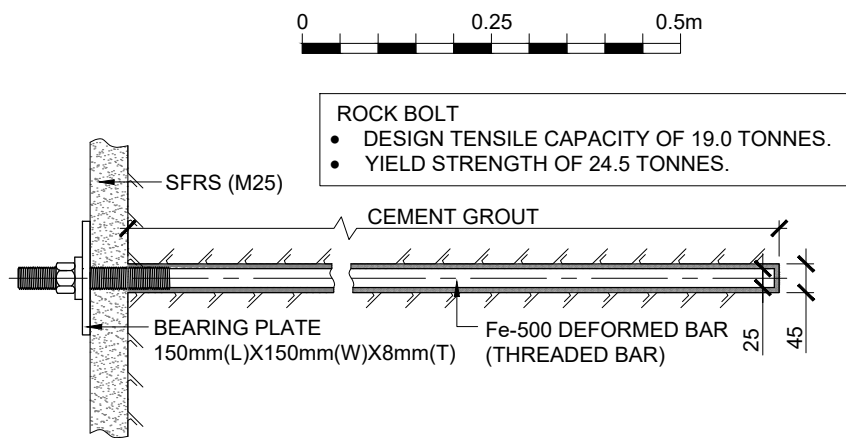
STAGE-1 PLAN



DETAIL-A



FULLY CEMENT GROUTED ROCK BOLT



EXECUTION SEQUENCE:-


- EXECUTION OF ROOF UMBRELLA (FULLY GROUTED PIPES 310Mpa BOTH WAYS) IN THE CORRECT POSITION BEFORE HEADING EXCAVATION. AT EACH FACE 50mm TO 100mm THICK (AS PER SITE CONDITION) SFRS SHALL BE PLACED AFTER EACH EXCAVATION CYCLE (750mm TO 1000mm). THE GROUTED PIPE SHALL BE DONE BY EXCAVATION AND CONCRETING OF ONE PIPE AT A TIME AND ONLY AFTER THAT THE NEXT PIPE, WHICH IS AWAY FROM THE EARLIER PIPE SHALL BE EXECUTED. NO TWO PIPES SHALL BE EXECUTED AT A TIME.
- AFTER EXCAVATION OF EACH STAGE, 50mm THICK SFRS SHALL BE APPLIED ALL ALONG THE EXCAVATED SURFACE.
- THEN, THE LATTICE GIRDER SHALL BE INSTALLED IN POSITION AS SHOWN IN THE DRAWING. THE 200mm THICK SFRS SHALL BE APPLIED ENCASING THE LATTICE GIRDER IN TWO LAYERS (100mm + 100mm). 250mm THICK SFRS SHALL ALSO BE PLACED ON THE FLOOR AFTER EACH STAGE OF EXCAVATION.
- Ø25, ROCK BOLTS, FULLY GROUTED, 6.0m LONG @ 1.5m c/c, SHALL BE INSTALLED IN CROWN AND WALL AS PER EXCAVATION STAGES SHOWN IN DRAWINGS. GROUTING OF ROCK BOLTS SHALL BE CARRIED OUT SIMULTANEOUSLY DURING DRILLING OF BOLTS ITSELF.
- BACKFILL CONCRETE OR SFRS SHALL BE PLACED AS PER DRAWINGS.
- STAGE 1 EXCAVATION AND SUPPORT (FOR EACH CYCLE i.e. 750 TO 1000mm) SHALL BE CARRIED OUT TILL 15.0m LENGTH.
- THE HEADING EXCAVATION SHALL BE CARRIED OUT IN ONE STEP. THIS STAGE 1 HEADING SHALL BE CARRIED OUT WITH EXCAVATION & SUPPORT (FOR EACH CYCLE i.e. 750 TO 1000mm) FOR 6.0m LENGTH AND THEN BENCHING EXCAVATION AND SUPPORT (FOR EACH CYCLE i.e. 1500 TO 2000mm) SHALL BE CARRIED OUT FOR 4.0m LENGTH FOR STAGE 2. THEN AGAIN STAGE 1 SHALL BE FURTHER PROGRESSED BY 6.0m AND THEN FOLLOWED BY 6.0m EXCAVATION AND SUPPORT OF STAGE 2 (BENCHING) FOLLOWING THE SIMILAR CYCLE DEFINED ABOVE AND SO ON TILL FINAL EXCAVATION IS ACHIEVED.

SPECIAL NOTE:

EXCAVATION SEQUENCE IN THIS DWG. SHALL BE MANDATORY FOLLOWED.

NOTES:

- ALL DIMENSIONS & LEVELS ARE IN METRES EXCEPT SHOWN OTHERWISE.
- THE EXCAVATION CYCLE OF 750mm TO 1000mm SHALL BE CONSIDERED AS PER SITE CONDITIONS IN EACH STAGE FOR EXCAVATION AND SUPPORT SYSTEM. ONLY AFTER SUPPORTING THIS STRETCH (750mm TO 1000mm) IN EACH STAGE, THE NEXT CYCLE OF EXCAVATION SHALL BE CARRIED OUT.
- THE FULLY GROUTED ROCK BOLTS IN THE CROWN SHALL BE PLACED IN SUCH A WAY THAT THEY PASS THROUGH BETWEEN TWO PIPES (ROOF UMBRELLA) AND, IF REQUIRED TO MAINTAIN THIS, THE MINOR ADJUSTMENT CAN BE MADE AT SITE.
- THE YIELD STRENGTH OF FULLY GROUTED ROCK BOLTS IS 24.50 TONNE AND DESIGN CAPACITY IS 19.0 TONNE.
- THE GRADE OF SFRS SHALL BE M25.
- THE FULLY GROUTED PIPES (ROOF UMBRELLA 310 Mpa BOTH WAYS) SHALL BE DONE BY EXCAVATION AND CONCRETING OF ONE PIPE AT A TIME AND ONLY AFTER THAT THE NEXT PIPE, WHICH IS AWAY FROM THE EARLIER PIPE SHALL BE EXECUTED. NO TWO PIPES SHALL BE EXECUTED AT A TIME.
- FOR DETAILS OF LATTICE GIRDER REFER DWG. NO. HEC-AIPPL/NHIDCL/KB/TUN/10.
- FACE BOLTING AND SHOTCRETE SHALL BE CARRIED OUT IN CLASS IV AND V, WHEREVER REQUIRED.
- FOREPOLING SHALL BE CARRIED OUT IN CLASS IV, WHEREVER REQUIRED TO AVOID OVER BREAK AT CROWN.
- THE NUT OF THE GROUTED BOLT SHALL BE TIGHTENED 12 HRS AFTER INSTALLATION TO ACHIEVE A FORCE AT THE ANCHOR PLATE OF APPROXIMATE 20 KN. THIS FORCE SHALL BE APPLIED BY CALIBRATED TORQUE WRENCH

				Project Title	This drawing is the property of AGNITIO INFRASTRUCTURE PROJECTS PVT LTD and must not be passed on to any person or body not authorised by us to receive it nor be copied or otherwise made use of either in full or in part by such person or body without our prior permission in writing. <b>Original Size: A2</b> <b>Path -</b> <b>Plotting Scale:</b> 1:125,1:50,1:10	Client  National Highways & Infrastructure Development Corporation Ltd	Drawing Title: TUNNEL EXCAVATION & SUPPORT CLASS V (SHEET 1 OF 2)		CONSULTANT	
				Consultancy Services for carrying out Feasibility Study, Preparation of Detailed Project Report (DPR) and providing pre-construction services in respect of 4 Lining of Kohima Bypass connecting NH-39 (New NH-02), NH-150 (New NH-02), NH-61 (New NH-29) and NH-39 (New NH-02) on Engineering, Procurement and Construction (EPC) mode in the state of Nagaland			Drawing No.: HEC-AIPPL/NHIDCL/KB/TUN/8	Sheet : OF 45	HIGHWAY ENGINEERING CONSULTANT IN ASSOCIATION WITH AGNITIO INFRASTRUCTURE PROJECTS PVT LTD	
							Scale :- NTS			
Revision Details				Chk By	Date	Suffix	Drn S.TYAGI	Dgn. P.MISHRA	Appd A.C. GARG	Date OCT-2018